




**CAPABILITY STATEMENT**

MAY 2020

**your partner on track**



“We are energetic, enthusiastic and committed to making our business a stand-out operation in all ways.”

*Colm Hand, Managing Director*

When establishing Handy Rail Equipment Hire Pty Ltd in 2018, we promised to deliver competitive, intelligent solutions to the Australia-wide rail infrastructure construction and maintenance market. With leading-edge, specialised equipment, an uncompromising approach to safety; and top personnel whose expertise, advice, experience and people-skills were second to none, we were ready to turn gaps in the hire marketplace into true opportunities.

Our team’s promise and expertise quickly attracted the right kind of attention from companies such as Martinus Rail, John Holland, Brunton Engineering & Construction, Downer Group, DSL Welding Services and Catfive. They have trusted us to deliver the right equipment, advice, service and cost-efficiencies – on time, all the time.

Colm Hand  
Managing Director.

## **ON TRACK FOR THE FUTURE.**

A happy, motivated team drives a successful future; our growing reputation continues to prove that belief. The future depends on our team players, their ‘can do’ attitudes, their belief in the company and their ability to foster strong customer relationships, that develop enduring trust.

While business opportunities are pivotal to a successful future, we also believe that mutual trust and respect together with reliability, dependability, honesty and experience – ensures a future that’s satisfying for everyone.

## EVERYBODY NEEDS A MARKETING EDGE; THIS IS OURS.

We don't want to be the biggest in the business; we just want to be the best. So we offer a large pool of specialists with in-depth understanding of the many challenges facing the rail business – together with creative solutions that can help you overcome them.

We operate from two main bases, one in Sunshine North, Victoria and the other in Heatherbrae, NSW. From these locations we can continue to provide a streamlined national service to all our customers.

We also offer a 24/7 service featuring dedicated account representatives, so we can be always there when you need us.

Ask us how we can make your job quicker, easier, better.

“ Handy Rail Equipment Hire provide us with not only a reliably great product but impeccable service. The team make themselves available – inside and outside working hours, whenever the need arises.”

*Adam O'Sullivan, Track Superintendent, Martinus Rail Australia.*

## OUR CLIENTS.



## OUR PEOPLE.

We're all about delivering time and cost-effective solutions and co-operating professionally with other disciplines/contractors where needed. The pressures of time-critical shutdowns and deadlines faced by Australia's rail infrastructure, are well understood by us and our team.

### OUR TEAM IS BUILT ON:

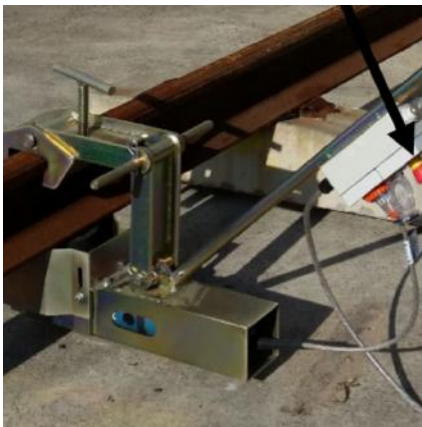
- Many years of experience in rail maintenance and construction in Australia and New Zealand.
- Easy availability to discuss situations and offer professional, expert and friendly advice.
- Our branch staff will demonstrate how to operate each piece of equipment safely, before you leave the branch OR on delivery to your site.
- Our permanent team continually upskill through additional education/training, in line with business needs and personal development.



## OUR EQUIPMENT.

We specialise in dry hire equipment for heavy rail maintenance and construction, verse testing, re-sleeping/rerailing/regauging and switches and crossing replacements. The range is modern, and fully maintained and serviced (to exacting standards) by our professionals, placing less strain on your maintenance & compliance team.

All equipment complies with state and national and safety requirements and comes with a QR code, which allows our customers to scan for instant access to important information. Manuals, risk assessments, maintenance schedules are at your fingertips.



- A Frame
- Drill - Heavy Duty Sleeper Pt8
- Drill – Sleeper
- Flat Deck Truck
- Grinder – Rail Profile Mp12
- Grinder – vertical Rail Mv3
- Grinder – Web
- Grinder – Underfoot
- Hercules Multigauge Trolleys
- Impact Wrench – Rail Handheld Petrol
- Rail Bender (Vertical)
- Rail Saw with Clamp
- Rail Weld Shears (31 to 60kg Profile)
- Rotabroach Rail Drill
- Tensor – 70t Hydraulic Power Pack, Camp and Ram Assy Kit
- Trackjack 10t-15t
- Track Pack Trolley
- Track Pack with Brakes
- USM 36 Ultrasonic Flaw Detector
- Utes
- Verse Unit
- 600L Water Trailer
- Welding Machines – Wire Feed

### HAND TOOLS

- Ballast Forks
- E Clip Pan Setter Hand 41kg/47kg to 60kg
- E Clip Puller (Hand)
- Fast Clip Hand Extraction (Narrow)
- Fast Clip Hand Extraction (Wide)
- Fast Clip Hand Insertion (Narrow)
- Fast Clip Hand Insertion (Wide)
- Hammer Sledge
- Nipping Bars
- Pelican Pick
- Pigs Foot
- Robel Clamps
- Straight Edge 1m with 1.8mm
- Straight Edge 1m with 0.5mm Nib
- Tamper – Petrol Cobra
- Thermic and Railtec Welding Equipment
- Track Gauge (Broad and Standard)
- Traklok Insertion/Extraction

### ATTACHMENTS

- E-Clip Installation Head
- Fast Clip Head (Installation and extraction)
- Spike Puller

“ It has been very favourable to have efficient reliable support like Handy Rail Equipment Hire. My company completes a diverse range of rail jobs from bridge construction, re-rail, reconditioning works, turnout construction etc. requiring a large range of different tools. Pranesh at Handy Rail Equipment Hire has been able to supply certain equipment we needed at a very competitive rate. It’s always a pleasure to deal with Pranesh and his team.”

*David Ruttley, All Rail Hire.*

## **SAFETY – ALWAYS AIMING FOR ZERO INCIDENT.**

We believe that communication and education are vital to maintaining effective procedures that ensure the best safety routines are understood and employed. Safety is the first item on our regular meeting agendas, and it’s not only the safety and well-being of our people, it’s for everyone we come in contact with – our clients, suppliers, job-site personnel, contractors and the community.

- We have an Integrated Work Health and Safety Management system that is aligned to ISO 45001, ISO 9001:2005 and ISO 14001: 2005.
- All our plant and equipment information is stored on this system and the Plant & Equipment Register maintains an easily searchable register of all plant and equipment.
- We list calibration and maintenance item requirements (including testing and tagging) and receive automatic email notifications.
- All maintenance and service documents are uploaded to this system and we can allocate equipment to our customers (to track and monitor).
- Skytrust automatically allocates QR codes to individual plant to enable maintenance staff to use QR codes in the field and access plant information instantaneously.
- All maintenance and servicing of equipment is done by trained and competent workers.
- We ensure that adequate training and safe operation procedures are in place prior to use of equipment.



## PROJECTS.

### ARTC NORTH EAST LINE – IN PROGRESS

**JOHN HOLLAND, MARTINUS RAIL AND CAT5**

Handy Rail Equipment Hire is a supplier of dry hire equipment requirements for the ARTC North East line upgrade project. Starting early in 2020, this project is on track to be completed by mid-2021, accomplishing one of the projects requirements.

Project outcomes: improving passenger service reliability by upgrading track condition, reducing delays and improving travel comfort for travellers.

### NORTH EASTERN RAIL LINE – IN PROGRESS

**JOHN HOLLAND, MARTINUS RAIL AND CAT5**

Ongoing hiring since 2018.

### MELBOURNE PORTS – IN PROGRESS

**MARTINUS RAIL**

On-going maintenance.

### VIOLET TOWN, VICTORIA – COMPLETED

**MARTINUS RAIL**

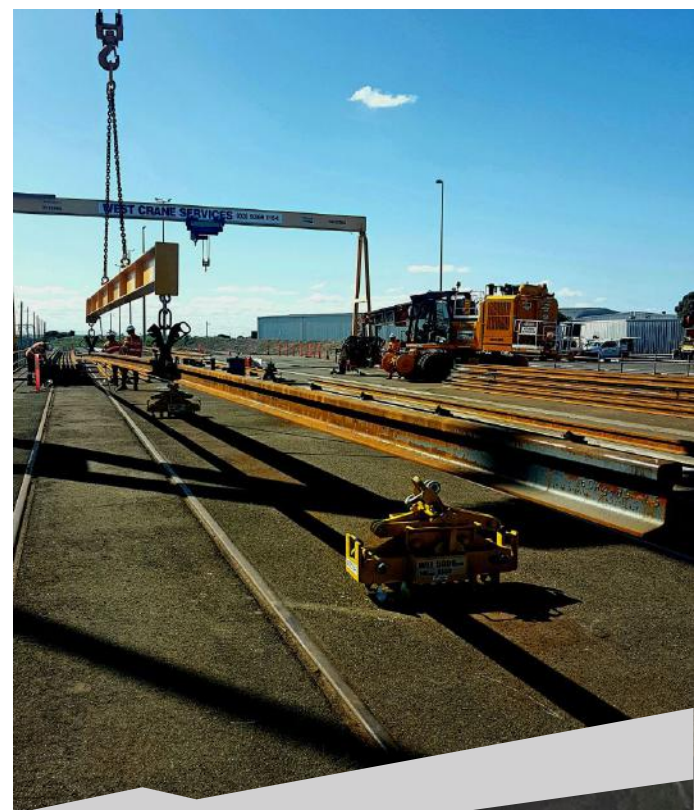
A rerailling project with two crossovers, involving more than 60 hours installation. Completed with minimal downtime.

### VIOLET TOWN LINE, VICTORIA – COMPLETED

**MARTINUS RAIL**

### BALLART LINE UPGRADE – COMPLETED

**DOWNER EDI**





**HANDY RAIL EQUIPMENT HIRE PTY LTD**

ABN: 71 630 470 432

**HEAD OFFICE – NEW SOUTH WALES**

25 Camfield Drive  
Heatherbrae NSW 2324

Colm Hand  
Managing Director  
Mobile: 0427 451 004  
Email: colm@handyrailhire.com.au

**VICTORIA**

39 Davies Avenue  
Sunshine North VIC 3020

Pranesh Maharaj  
Area Sales Manager  
Mobile: 0432 574 042  
Email: pranesh@handyrailhire.com.au

**your partner on track**

[www.handyrailhire.com.au](http://www.handyrailhire.com.au)